

2005 – 2007 Dodge Cummins “Modified” 5.9 Fitch Part # F10082618BC



INSTALLATION KIT INSTRUCTIONS DIESEL ENGINES

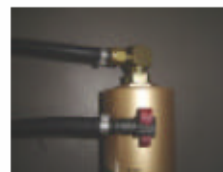
Do not smoke or be near open flame while performing installation. Wear eye protection as the fuel system is under pressure.

Kit includes

- Installation bracket, cable ties, and the fuel line disconnect tool
- EFI multi port fuel injection hose with Male/Female rail quick connect fittings

Installation Procedure

- Screw the 90° fittings into the top and bottom of the Fitch unit. Tighten down the lock nut on the 90° fittings.
- Using the 26” hose with the female plastic fitting, screw the opposite end to the 90° fitting at the top of the Fitch unit and the 18” male hose to the bottom of the Fitch unit.
- Remove the nuts on the intake tube expandable band clamps.
- Install both Fitch brackets around the Fitch unit and slide brackets over the intake tube band clamp studs and tighten down the original nuts removed previously. Fitch is now mounted.
- Run both hoses from the Fitch unit down to the factory quick connect fittings. These fittings are located on the driver's side under the fuel filter in the engine compartment and can be accessed from the driver's side front wheel well. For best access turn wheel to the right.
- Unscrew the filler cap to release residual pressure in the fuel system.
- Disconnect the fuel supply line male/female quick connect fitting. The easiest way to access this, is to reach in through the driver's side front wheel well.
- The factory male quick connect fitting contains a removable blue safety lock tab. Carefully remove this blue lock tab and install it sliding it onto our Fitch male quick connect until it bottoms out. **Be careful not to break this lock tab.** Refer to page 3.
- Connect the Fitch female quick connect over the factory male, and push the locking tab over. Snap in the secondary locking clip on the Fitch female.
- Push the Fitch male connector into the factory female until locked in place.
- Disconnect both the battery leads and touch together for at least 30 seconds. If vehicle is equipped with 2 batteries disconnect all 4 leads, and then touch one set at a time together. Now reconnect both lead sets to both batteries. This will ensure the computer memory is reset.
- Turn the key to the “on” (not crank) position, wait 10 seconds, turn the key off and repeat 4 – 5 times. This is to prime the fuel system.
- Double check all connections for leaks, and also make sure fuel lines do not come in contact with any of the exhaust, intake, or cooling system components. Priming/Bleeding the system may be needed but varies with every installation to ensure the removal of any air in the fuel line.
- Start vehicle and hold steadily at 1500 rpm for 60 seconds to cycle fuel through system to eliminate air in system.



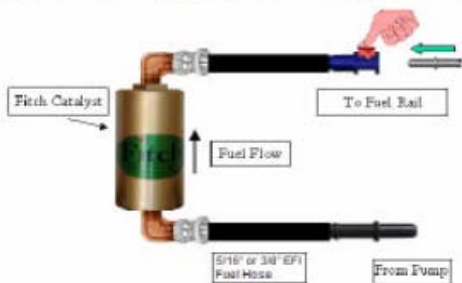
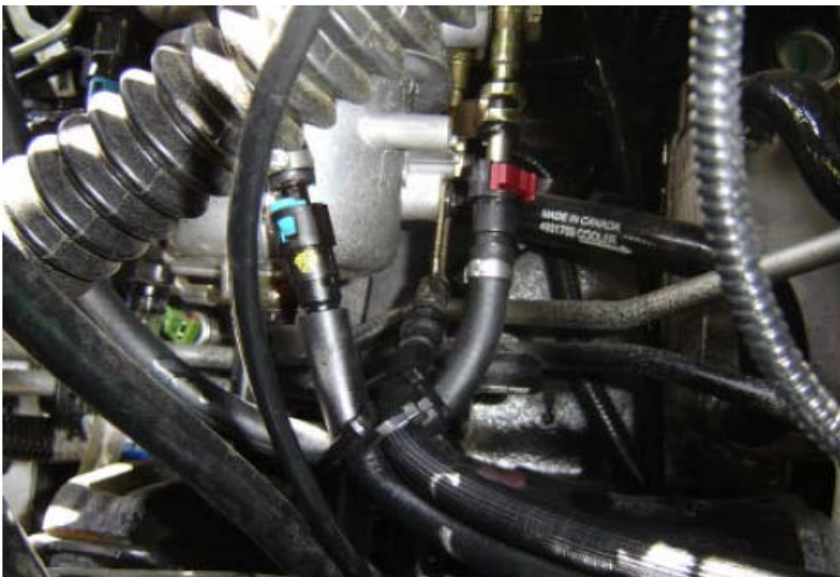
Manufacturer's Warranty

The Fitch® Fuel Catalyst products have a ninety (90) day money back guarantee provided the installation instructions were followed correctly and the return of the product is based either on product defect or dissatisfaction with the product's performance. The Fitch Fuel Catalyst device is guaranteed to be free from defects in material and workmanship for a period of 250,000 miles (defined by EPA in 40 CFR 85.117), or 5,000 operating hours from the date of installation. The manufacturer warrants that the installation of Fitch Fuel Catalyst product on a vehicle will not cause the emissions noncompliance of the engine on which it is installed for the life of the catalyst from the date of installation.

OTHER THAN THE WARRANTIES HEREIN CONTAINED, THERE IS NO OTHER WARRANTY, WHETHER EXPRESSED OR IMPLIED (INCLUDING ANY WARRANTY OF MERCHANTABILITY OR FITNESS FOR A PARTICULAR PURPOSE) THAT SHALL EXIST IN CONNECTION WITH THE SALE OR USE OF ANY FITCH FUEL CATALYST PRODUCT. The Manufacturer assumes no liability for faulty or improper application of its products or resulting from collision or abuse. All claims under the Manufacturer's warranty must be made during the applicable warranty period and the product claimed defective or non-conforming returned by Buyer. Return the defective device along with dated proof of purchase to the distributor from which the device was purchased so that the distributor may handle your warranty claim in an expeditious manner. Manufacturer will repair, or at its option, replace any defective or non-conforming product and return the repaired or replacement product without charge.

SUCH REPAIR OR REPLACEMENT IS THE EXCLUSIVE REMEDY (WHETHER UNDER THE THEORIES OF BREACH OF CONTRACT OR WARRANTY, NEGLIGENCE, STRICT LIABILITY OR ANY OTHER LEGAL THEORY) AVAILABLE FROM MANUFACTURER AND MANUFACTURER IS NOT RESPONSIBLE FOR DAMAGES OF ANY KIND, INCLUDING INCIDENTAL AND CONSEQUENTIAL DAMAGES RESULTING FROM ANY BREACH OF WARRANTY OF THIS CONTRACT.

Manufacturer's warranties shall not be enlarged, diminished or affected by, and no obligation or liability shall arise or grow out of Manufacturer's rendering of technical advice or in service in connection with an order or the goods furnished. Some jurisdictions do not allow the exclusion or limitation of incidental or consequential damages or exclusions of implied or deemed conditions or warranties, so the above limitations or exclusions may not apply to you. This warranty gives you specific legal rights, and you may also have other rights that vary from jurisdiction to jurisdiction.



IMPORTANT NOTES

For any questions please call APSI toll free at 1-888-881-2774. Any variations of from these instructions should also be pre-approved by APSI. After installation is complete, (if convenient) drive the vehicle over 50 miles per hour for a minimum of 20 minutes with at least 2 start and stop procedures. This procedure will reset the computers memory on EFI engines to sense the treated fuel. For diesel engines and all other gasoline engines, disconnecting the battery is good safe practice.

If you have difficulties with this procedure, contact your local automotive garage for assistance.

Disconnect the factory “quick connect” fitting by pressing on the 2 locking tabs.



Remove the lock tab by lifting the 2 smaller lock tabs over the ridge on the male connector. Typically a smaller screwdriver or pick tool will help ease this step.

